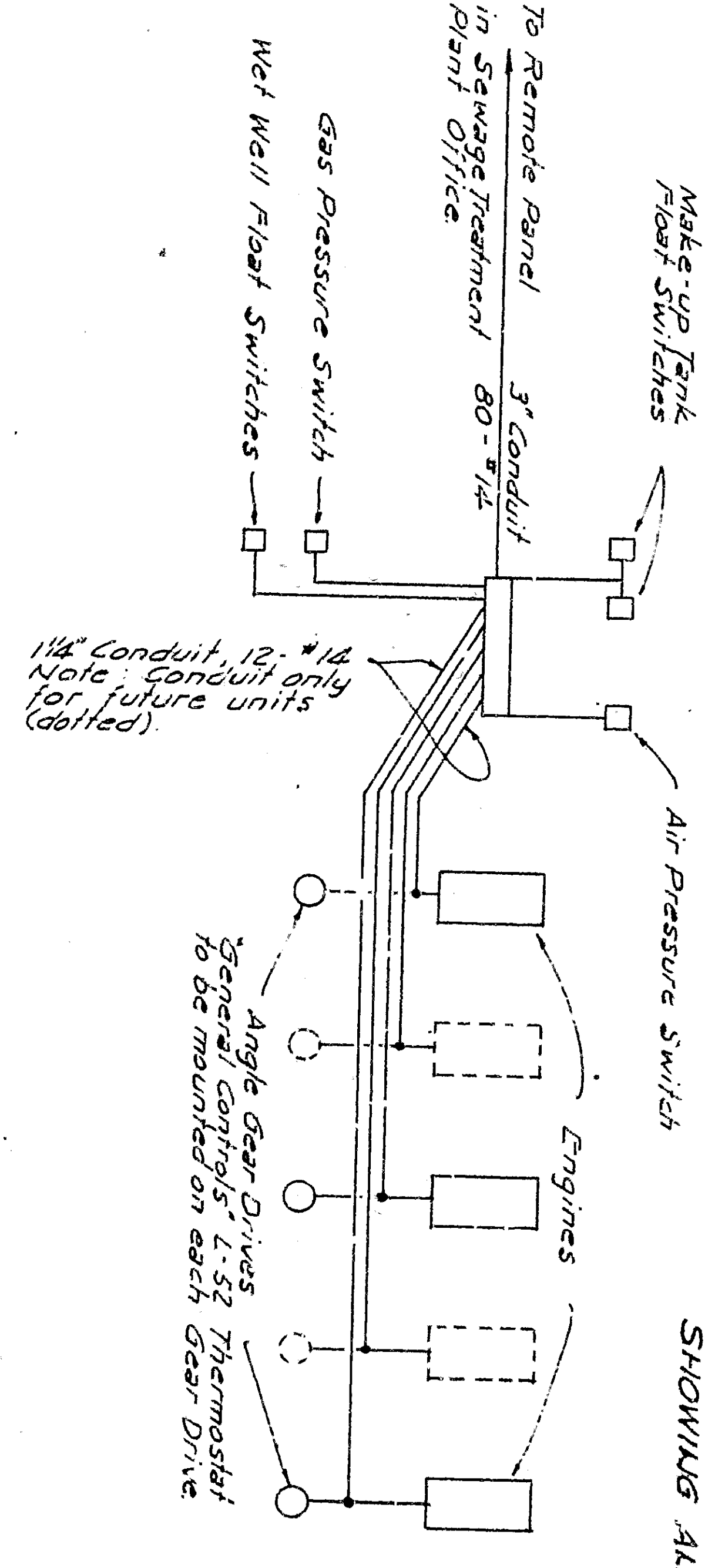
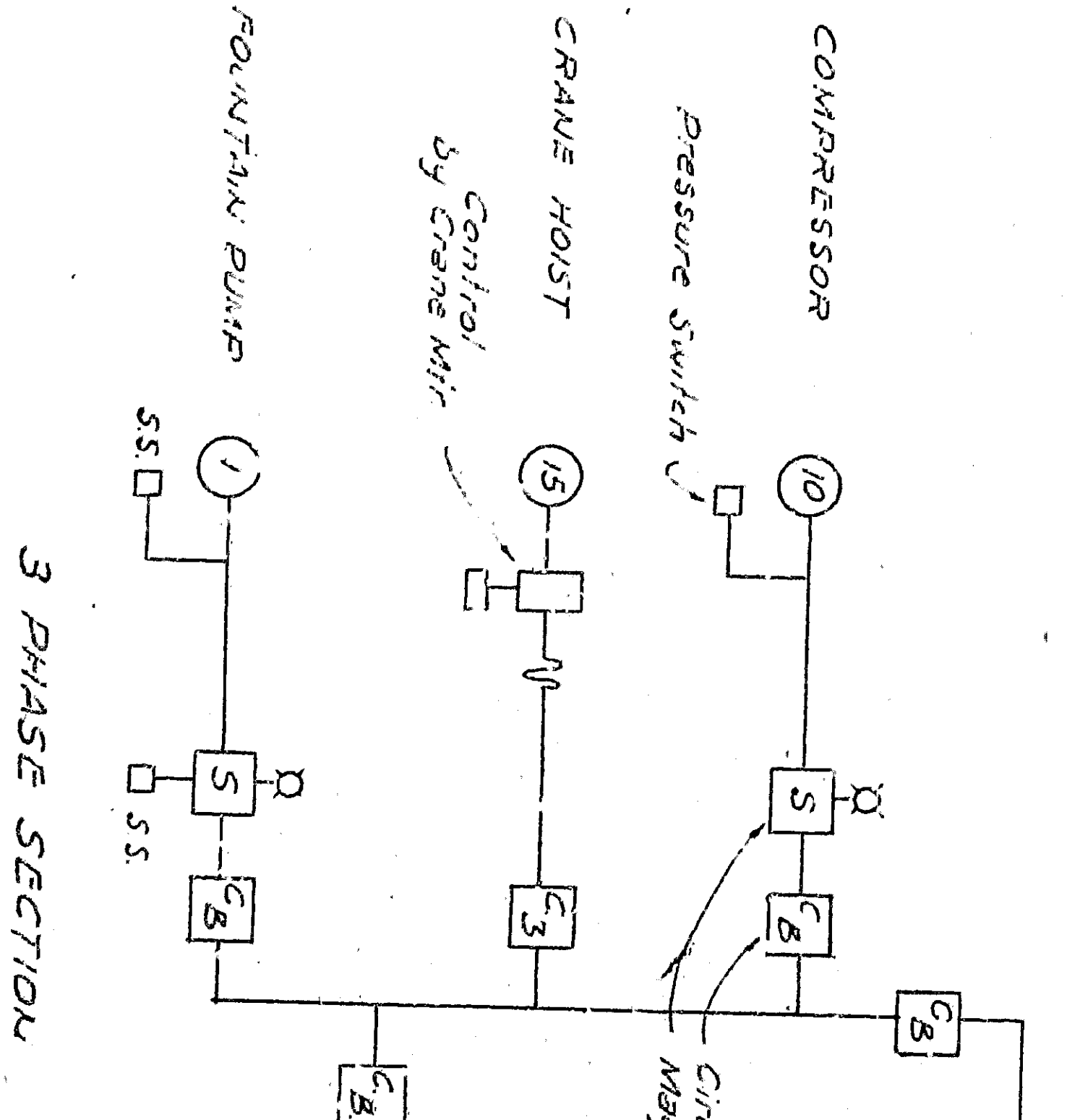


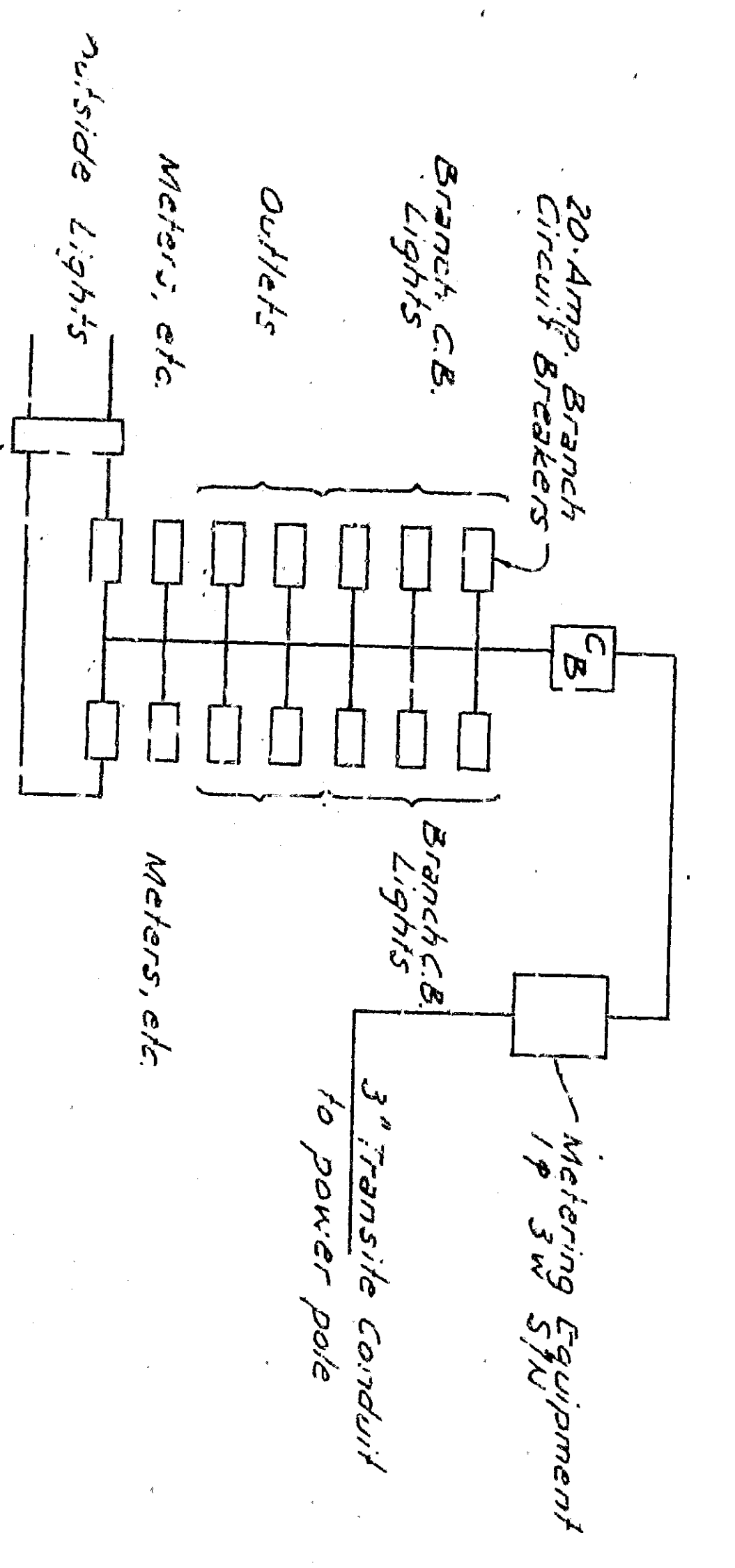
NOTE: Reserve Annunciator Panel to be installed in Office of Sewage Treatment Plant.



NOTE: Pressure switches to be replaced with adjustable Bourdon tube or gas filled type switches to be replaced with Bourdon tube or gas filled type switches on falling pressure of 50% Air Pressure. 0-300 class on falling pressure of 75%.

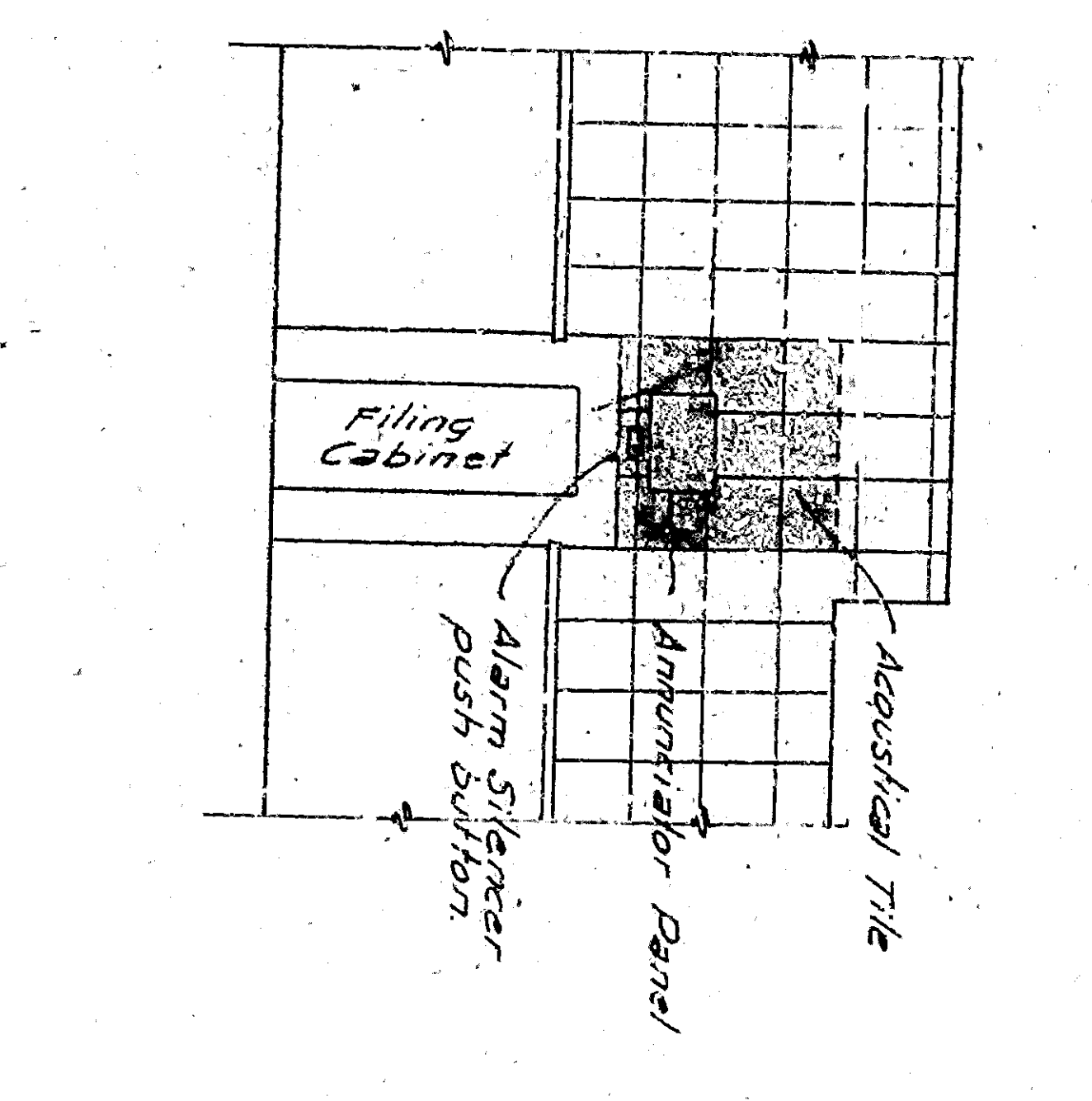
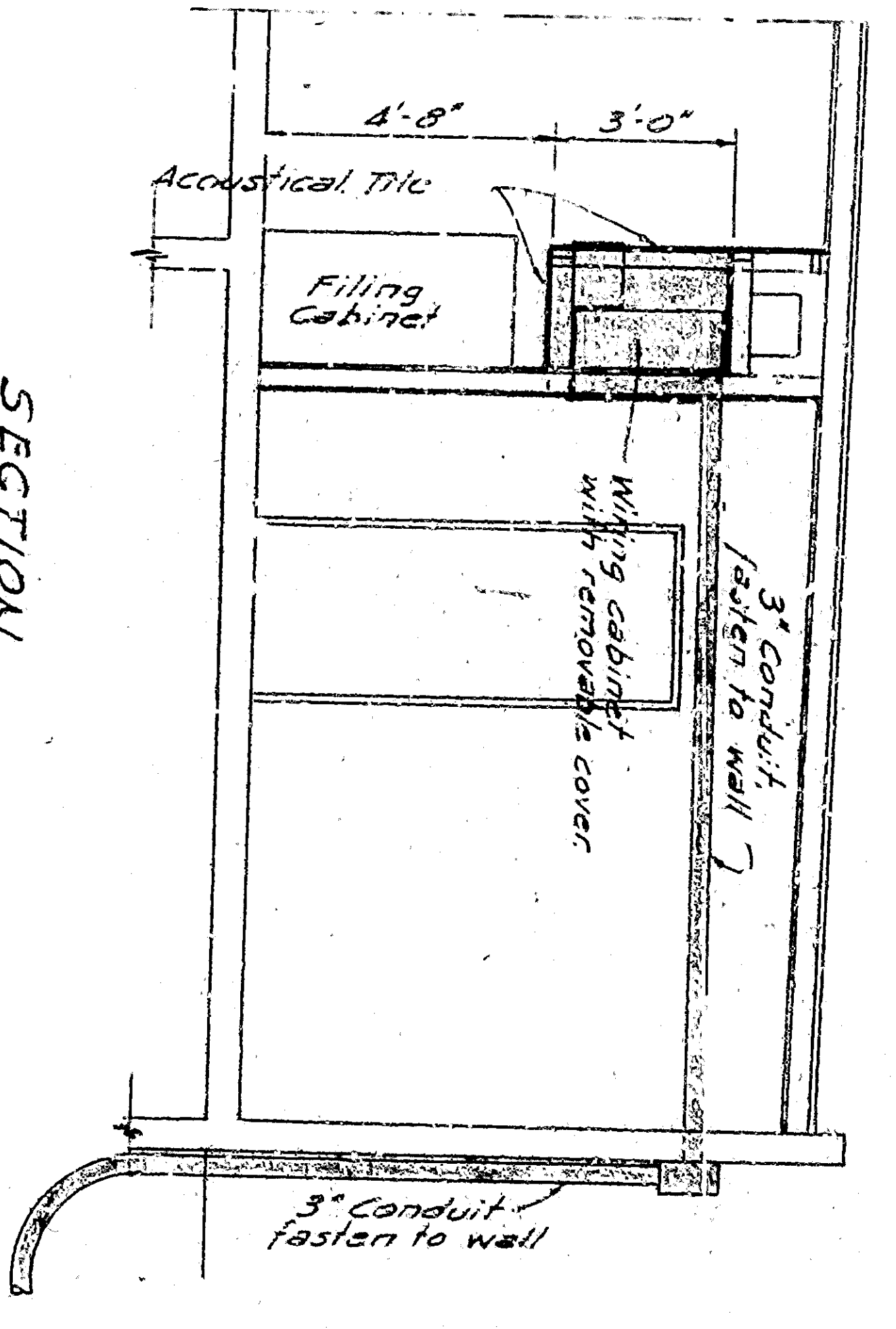
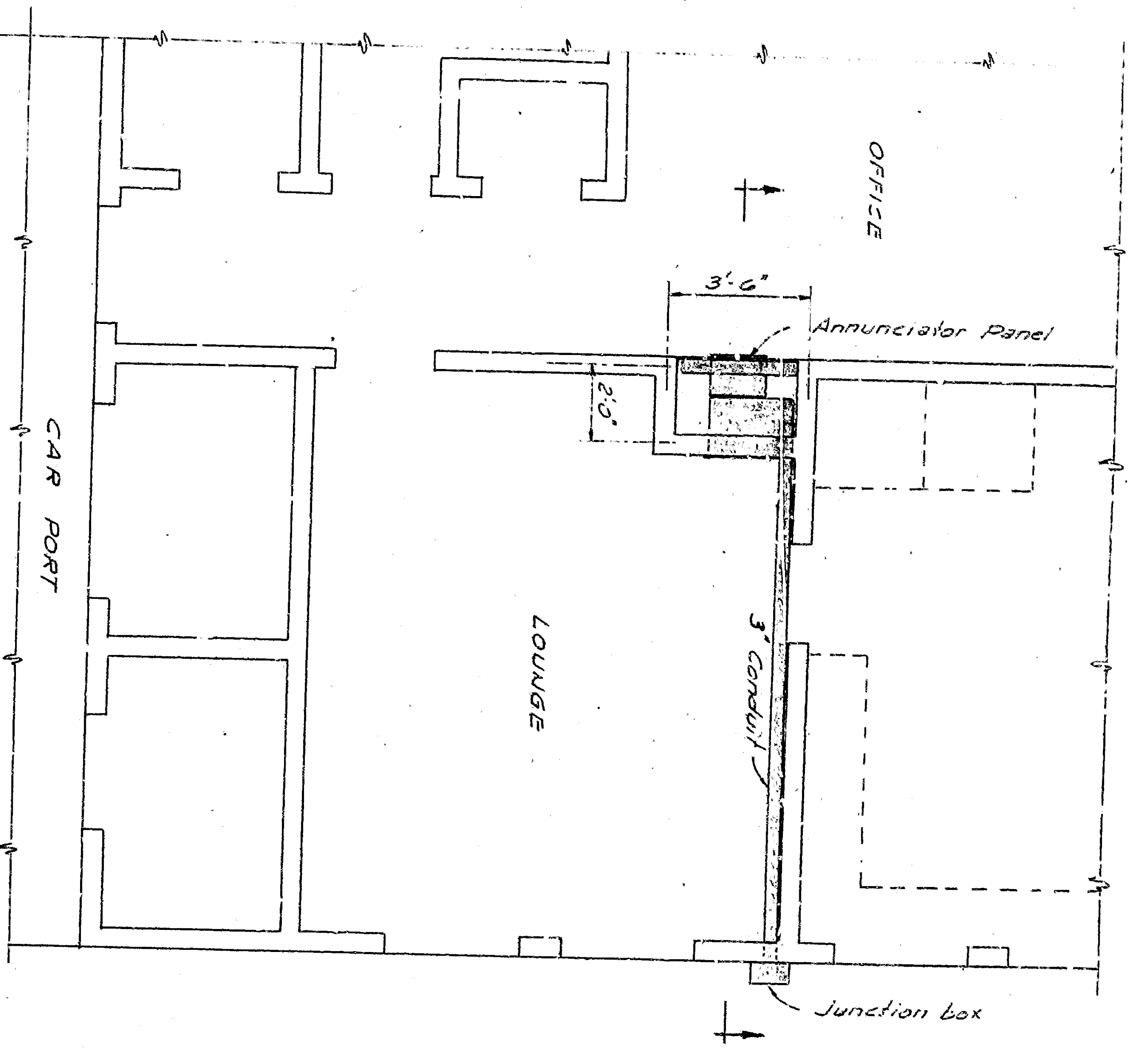
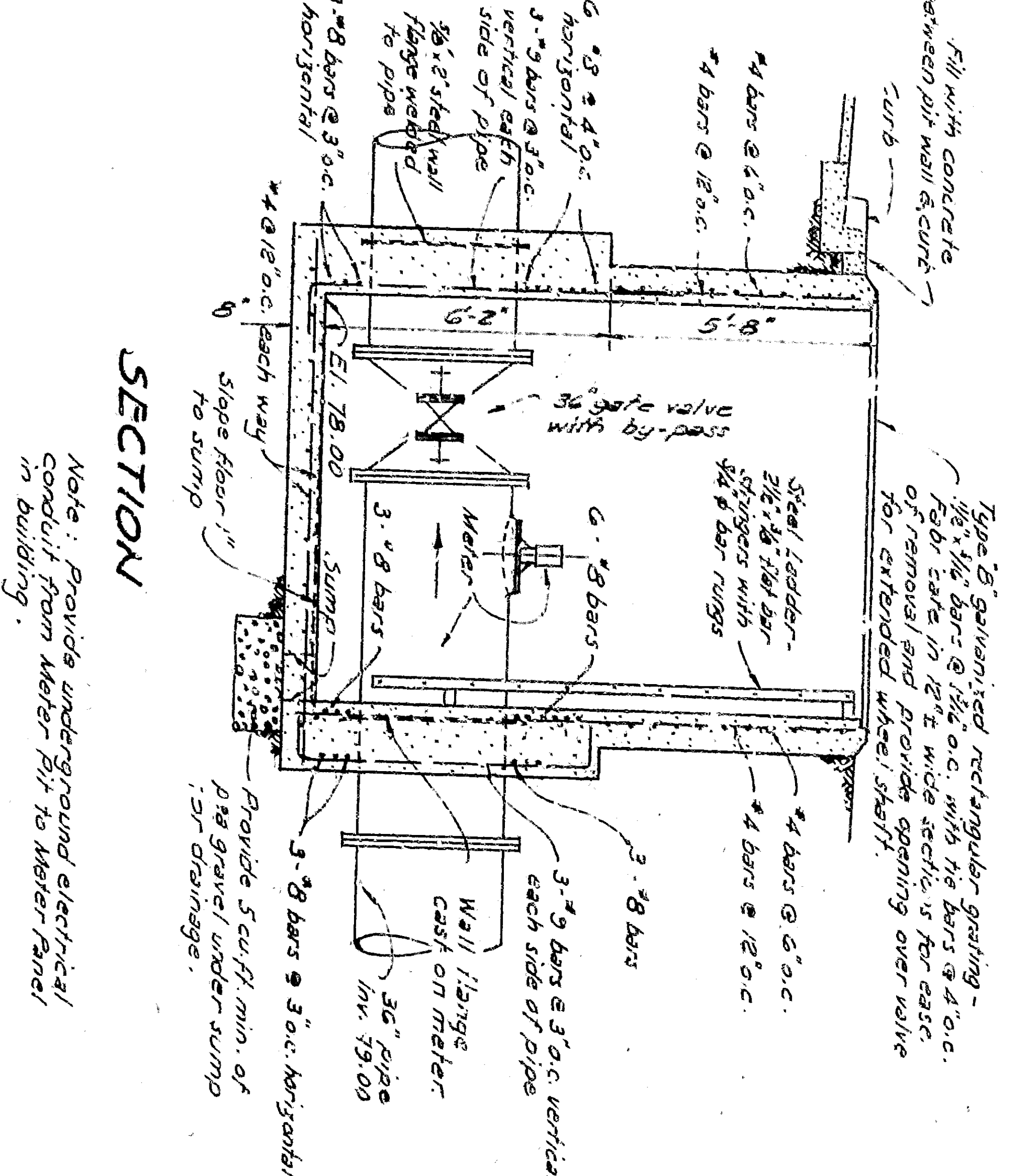
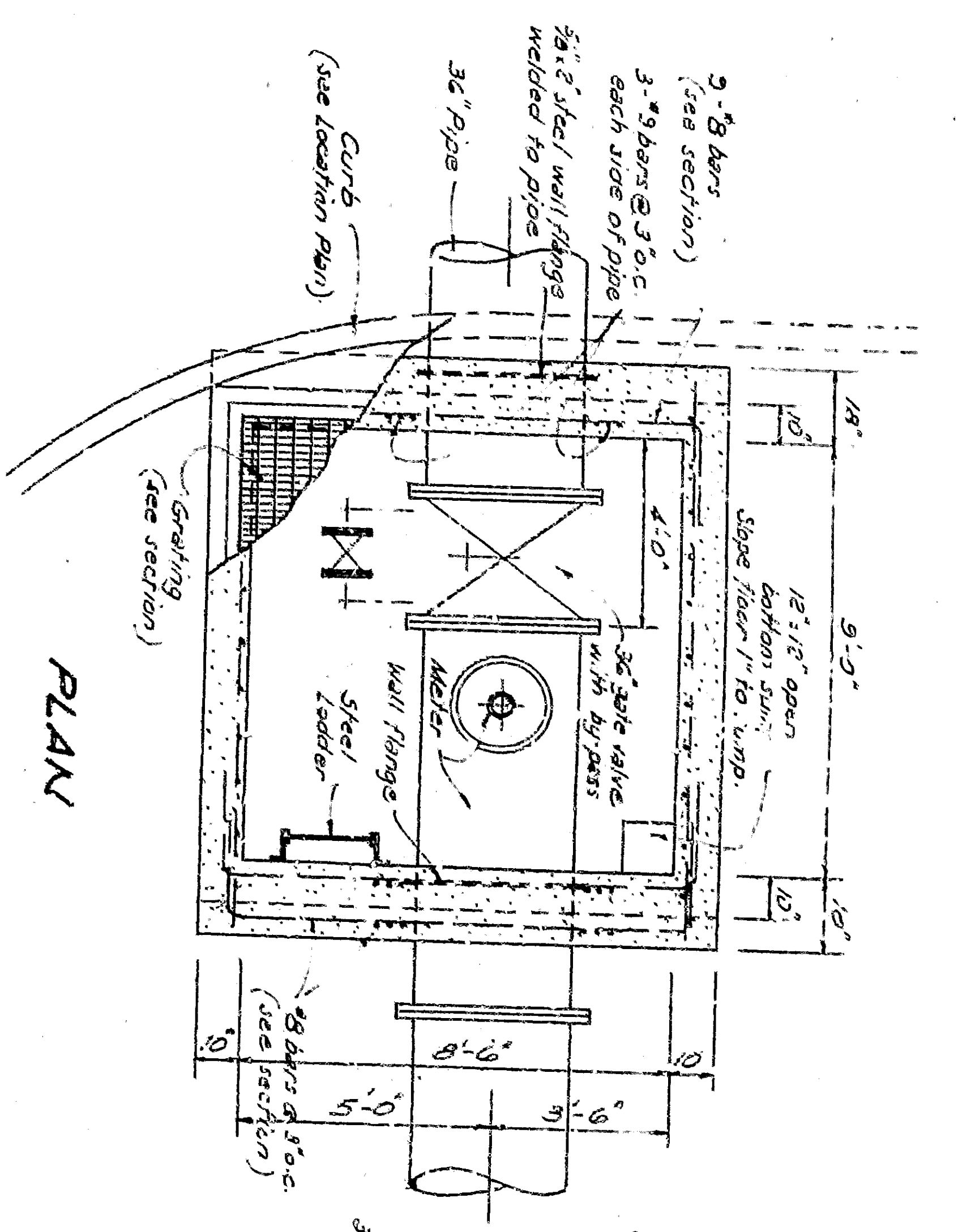


SCHEMATICS ELECTRICAL



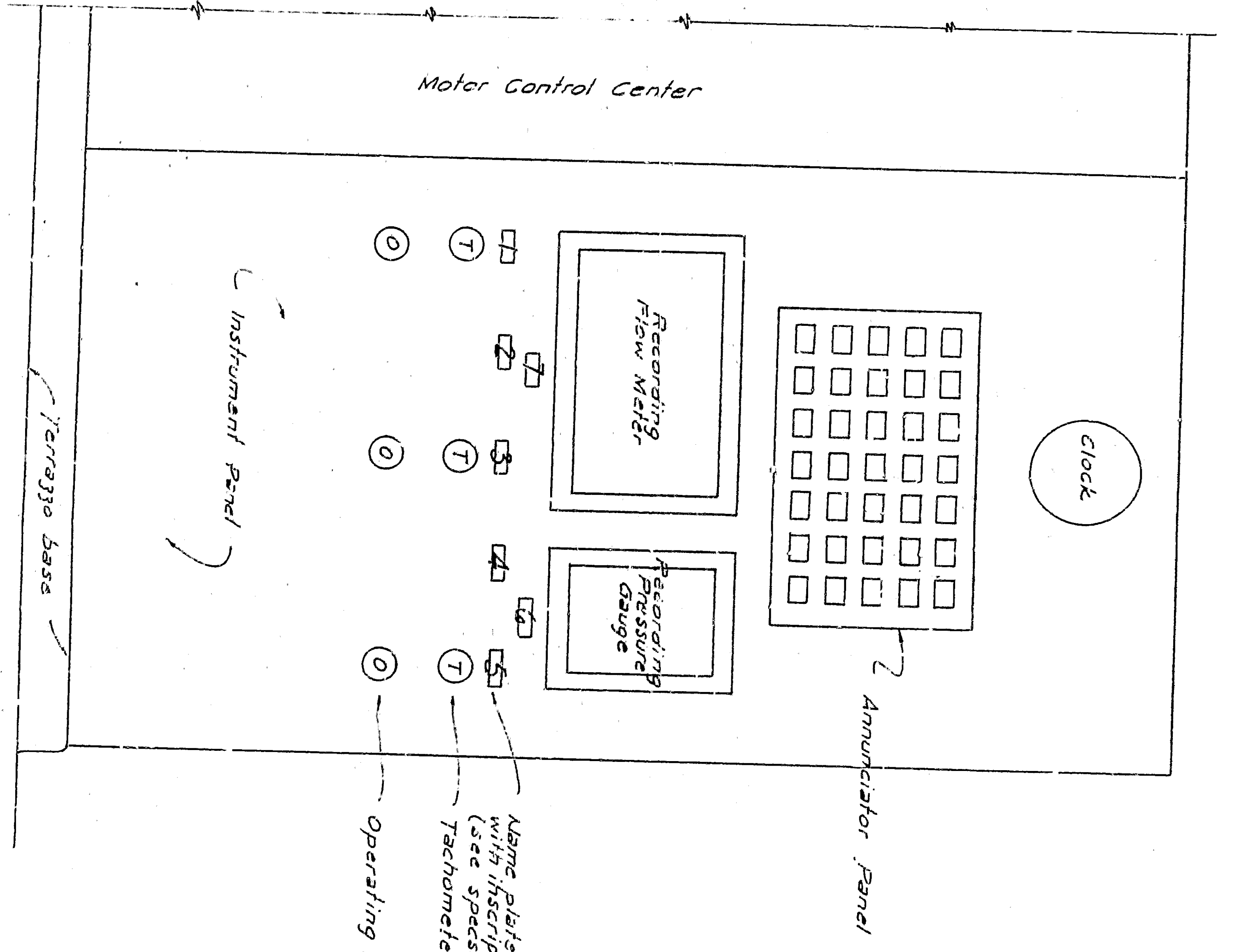
1 Magnetic Starters

EFFLUENT RECLAMATION
PUMPING STATION
SAN BERNARDINO
CALIFORNIA
1960
CURTIS ENGINEERING COMPANY
CONSULTING ENGINEERS
METER PIT INSTRUMENT PANEL
& ELECTRICAL SCHEMATICS
8

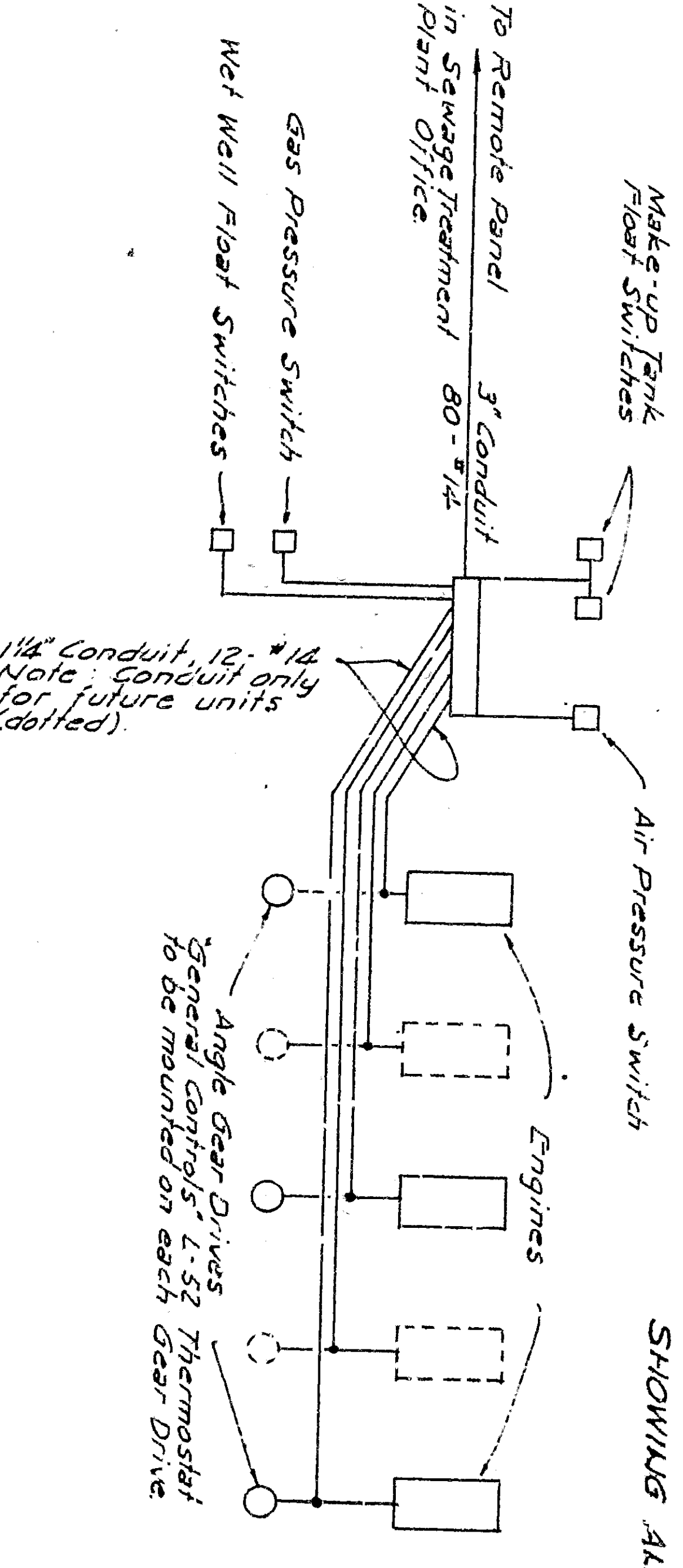


DETAIL - METER PIT
Scale: 1/2" = 1'-0"
SEE LOCATION PLAN

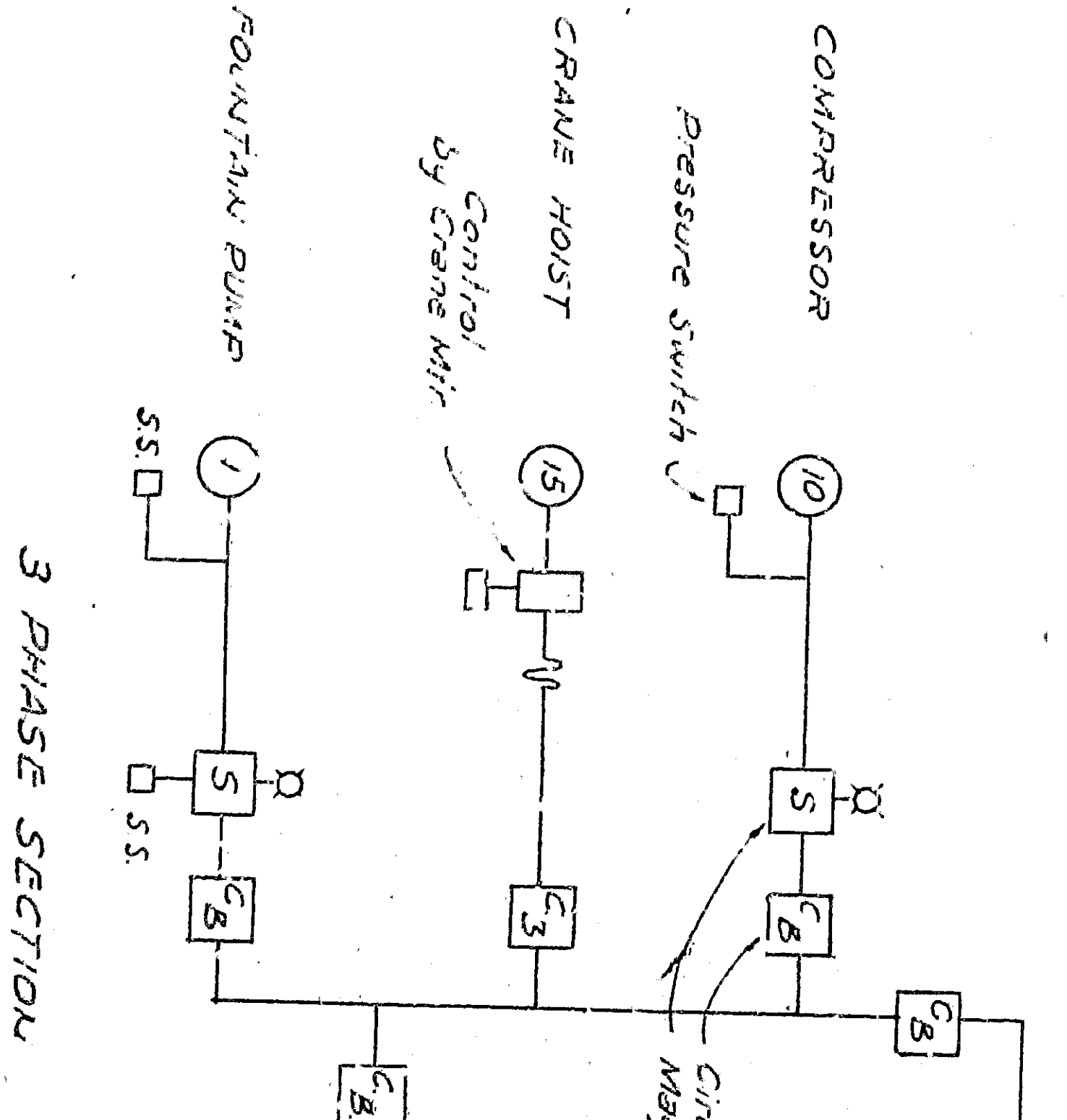
PLAN
SHOWING ANNUNCIATOR PANEL IN TREATMENT PLANT OFFICE
Scale: 1/2" = 1'-0"



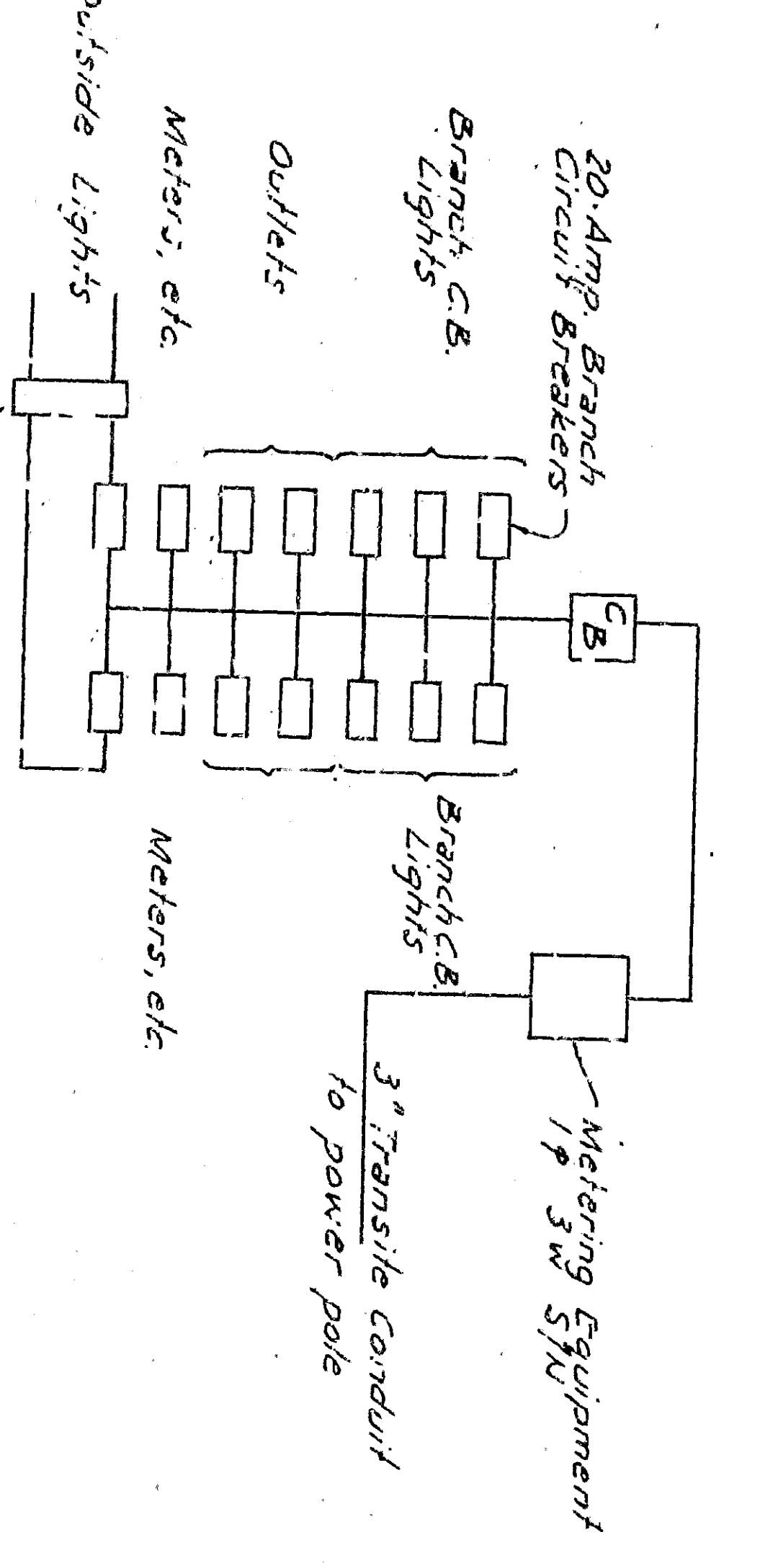
Motor Control Center
NOTE: Reserve from the same panel to be installed in Office of Sewage Treatment Plant.



SCHEMATIC
CONDUIT LAYOUT
FOR ANNUNCIATOR ALARM SYSTEM & ENGINE CONTROLS
NOTE: Pressure switches to be enclosed in adjustable insulation box or enclosure. All switches to be enclosed in a box or enclosure. All switches to be enclosed in a box or enclosure. All switches to be enclosed in a box or enclosure.



3 PHASE SECTION



SINGLE PHASE SECTION

- SCHEMATICS
ELECTRICAL
- 1 3" Flexible Conduit
 - 2 2 Amp Switches
 - 3 20 Amp Branch Circuit Breaker
 - 4 2 Amp Switches
 - 5 3" Flexible Conduit
 - 6 3" Flexible Conduit
 - 7 Meters, etc.
 - 8 Meters, etc.
 - 9 Magnetic Starters

EFFLUENT RECLAMATION
PUMPING STATION
SAN BERNARDINO
CALIFORNIA
1960
CURTIS ENGINEERING COMPANY
CONSULTING ENGINEERS
METER PIT INSTRUMENT PANEL
& ELECTRICAL SCHEMATICS
8